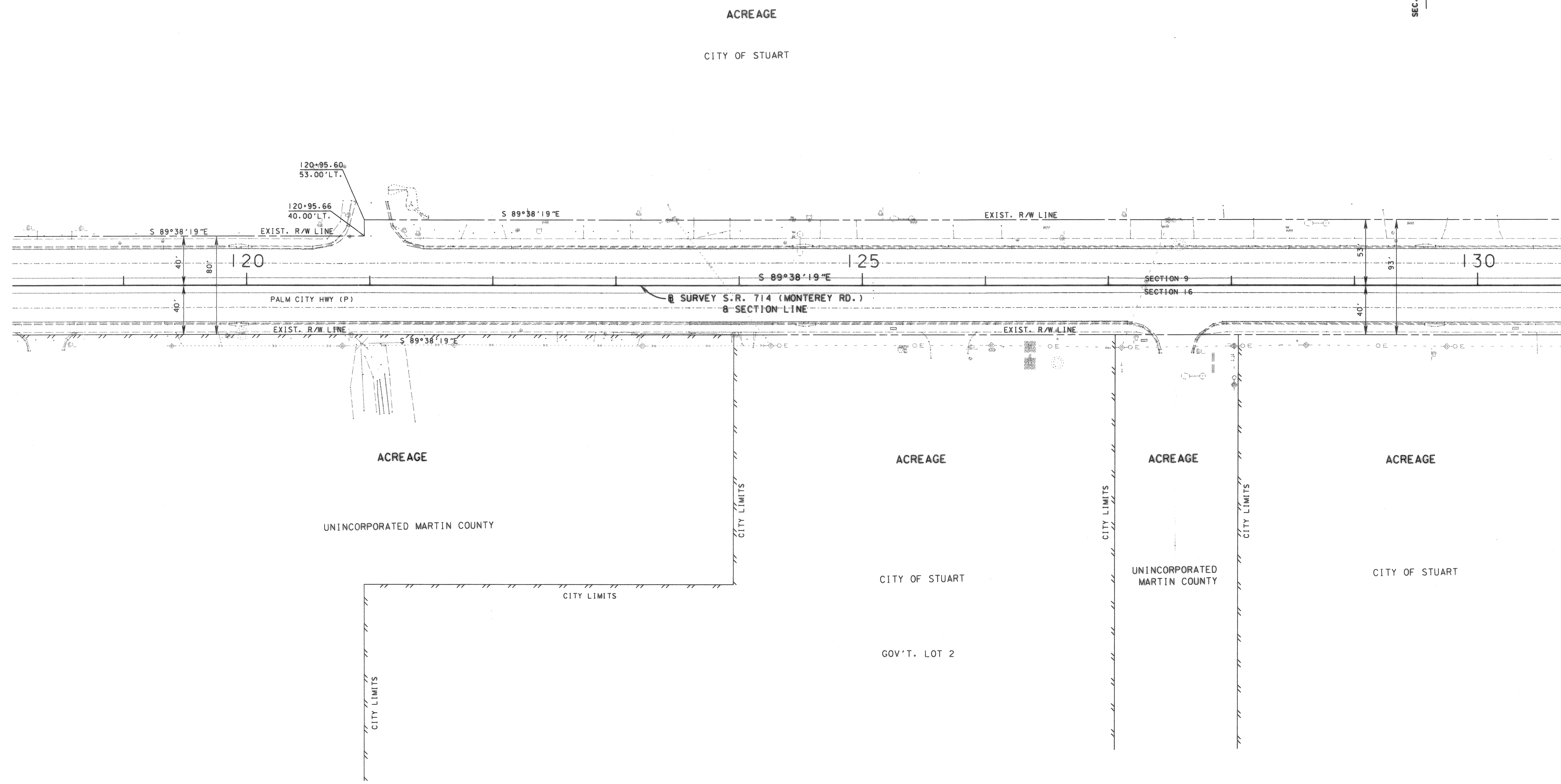


SEC. 9, 16, TWP. 38 S., RGE. 41 E.



SEE SHEET ONE FOR LEGEND AND GENERAL NOTES

S.R. 714 (MONTEREY ROAD) FROM S.W. PALM CITY ROAD TO S.R. 5 (U.S. 1-FEDERAL HIGHWAY)

MAINTENANCE MAP	FLORIDA DEPARTMENT OF TRANSPORTATION RIGHT OF WAY MAPPING	APPROVED BY <i>Jeffrey Smith</i> DISTRICT RIGHT OF WAY SURVEYOR	DATE 1/22/03	REVISION	BY	DATE	REVISION	BY	DATE	PRELIM MORAVA 03-17-03	BY	DATE	FED. PROJ. NO. N/A	SECTION 89092-MAINT.(1)	MAPS PREPARED BY F.D.O.T. DISTRICT 4	FIELD BOOK NO.'S
		REVISION	BY	DATE	REVISION	BY	DATE	FINAL MORAVA 03-31-03	STATE ROAD NO. 714	MARTIN COUNTY	W.P.I. NO. N/A	SCALE: 1" = 40'				
		REVISION	BY	DATE	REVISION	BY	DATE	CHECKED BROWN 06-25-03	ITEM/SEGMENT NO. 2288621	SHEET 6 OF 8						